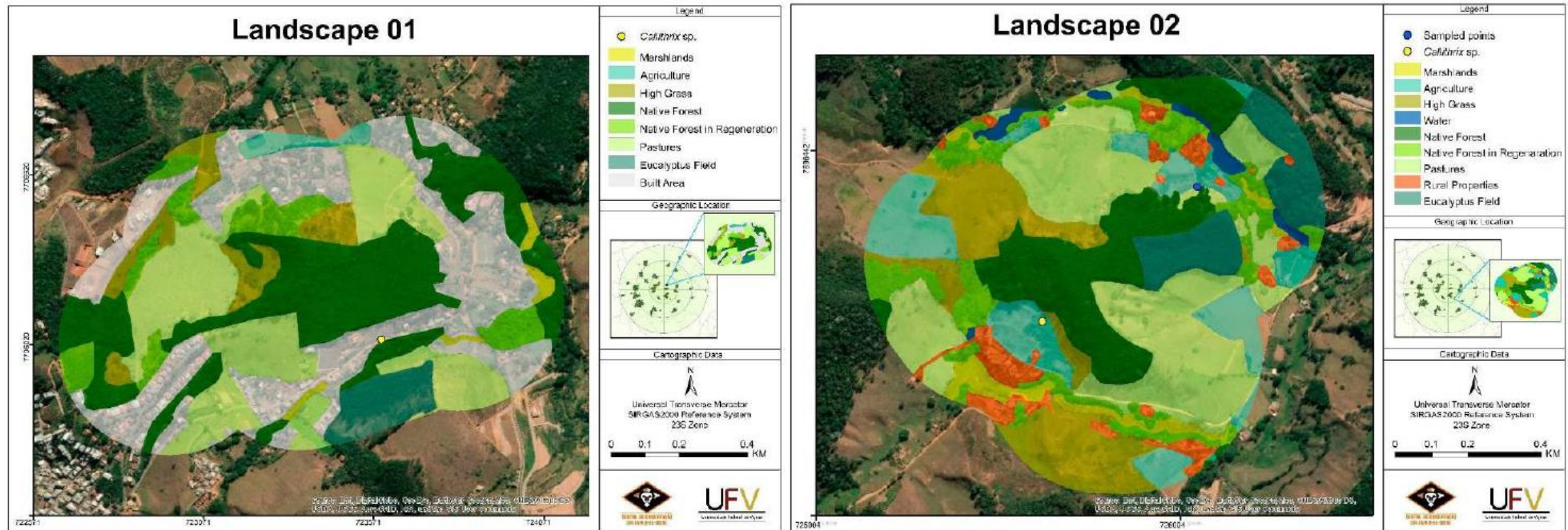




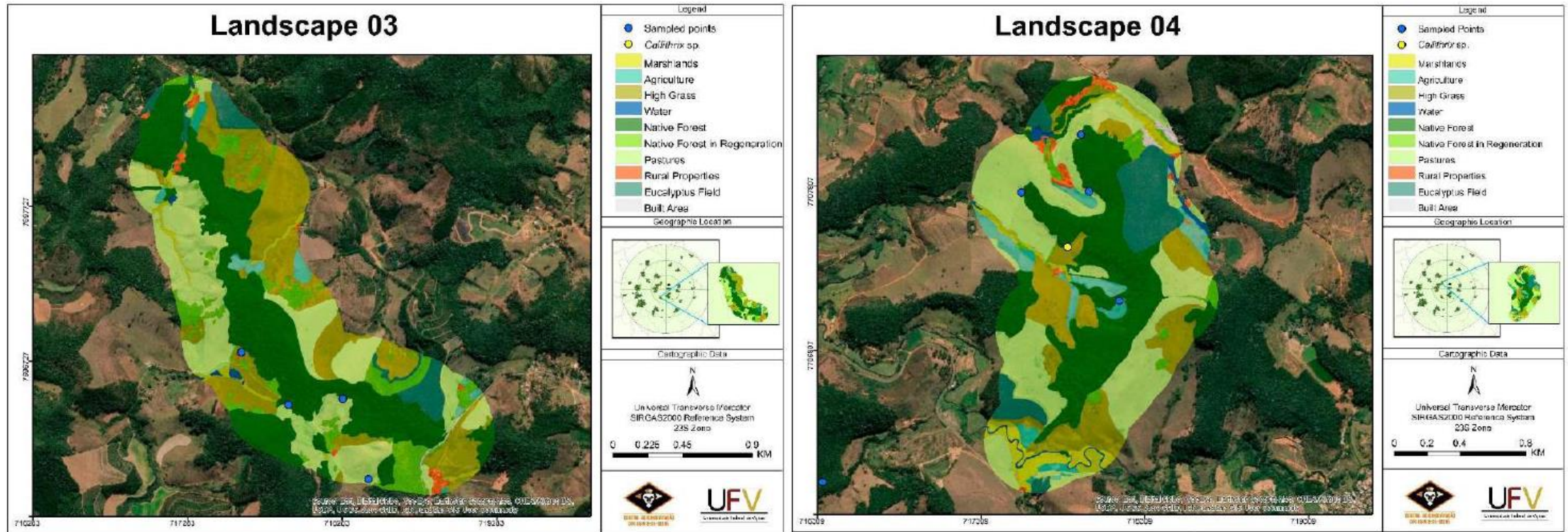
ID Frg	p1	p2	p3	p4	p5	p6	p7	p8	p9	p10	p11	p12	p13	p14	p15	p16	p17	p18	p19	DV (m)	AS (ha)	P_NF	C_NF	C_RS	C_EF
F1	1	3.708	15.13	25.6652	42.8571	46.4286	0
F2	1	0	8.466	13.05	15.3547	50.0000	29.4118	100.0000
F3	0	0	0	0	7.071	68.16	32.4709	41.6667	9.9357	30.0000
F4	0	0	0	1	0	5.134	59.41	27.5563	41.6667	11.1111	10.0000
F5	0	0	0	0	9.486	144.23	28.5617	30.9091	11.4919	16.3399
F6	0	0	0	0	8.624	145.24	30.7068	22.5000	9.4118	19.0476
F7	0	0	0	0	7.345	123.99	37.8445	28.7879	12.0910	33.3333
F8	0	1	0	0	9.481	127	36.7523	34.8485	9.5210	0
F9	1	0	1	0	1	0	1	1	1	1.606	149.82	42.0864	25.7576	14.1304	0
F10	0	0	0	1	0	0	6.062	146.74	34.5480	25.7576	10.9091	6.6667
F11	0	0	0	1	0	0	0	0	0	0	0	1	0	5.024	400.24	42.7828	16.4835	6.1033	8.3333
F12	0	0	0	0	1	0	0	0	0	0	0	0	0	0	0	6.888	320.36	36.7490	19.1176	6.1427	10.6061
F13	0	0	17.846	14	23.2179	66.6667	25.7310	0
F14	0	1	16.965	39.88	36.0306	60.0000	24.0530	0
F15	0	0	14.873	27	22.0613	38.4615	22.6601	0
F16	0	0	14.133	103.78	30.5996	33.3333	13.4503	0
F17	0	0	0	19.303	80	23.1092	20.0000	8.8136	6.6667
F18	0	0	0	0	13.603	61.52	21.8365	100.0000	13.7931	46.6667
F19	0	0	0	0	0	0	15.255	195	27.8524	28.5714	7.4934	9.1503
F20	0	0	12.994	92.22	30.8342	25.4545	12.1212	16.4835
F21	1	0	0	17.171	137.47	34.8783	24.4444	9.8560	46.6667
F22	0	0	0	0	0	1	18.293	252	36.2872	21.8182	6.2500	6.0606
F23	0	0	0	0	0	0	1	11.342	213	32.5034	14.4828	5.5309	8.2251
F24	0	0	0	0	15.697	144	32.1236	38.1818	11.3876	0
F25	0	0	16.625	243.70	40.7575	41.6667	10.8067	0
F26	0	0	0	0	0	0	0	0	0	0	0	0	0	0	0	0	0	1	0	19.788	466.59	38.1082	11.0517	3.4719	5.7041
F27	0	0	0	0	0	0	0	18.713	398.25	50.3797	15.0198	6.3575	12.6856
F28	0	0	0	24.635	41.48	29.5363	53.3333	60.0000	0
F29	0	29.595	11.32	15.4119	100.0000	44.7619	0
F30	0	0	22.873	6.52	18.6515	53.5714	47.1014	33.3333
F31	0	0	24.226	6.18	19.7990	47.6190	36.7647	50.0000
F32	0	0	0	0	0	0	0	29.390	105.17	26.6462	25.0000	9.3641	100.0000
F33	0	0	0	0	21.083	56.21	24.5288	23.1579	16.8076	52.7778
F34	0	1	0	0	0	0	0	28.746	115	27.6565	40.0000	11.3978	9.8901
F35	1	0	0	0	0	0	25.409	104.52	31.4162	40.0000	12.6923	26.6667
F36	0	1	0	0	0	0	0	0	0	28.141	172.44	37.2427	22.7941	8.5154	10.6061
F37	0	0	0	0	0	0	22.129	321.93	39.7558	17.9803	5.8532	12.8655
F39	1	0	1	0	19.928	1111	45.5348	8.7179	2.0123	6.7073
F40	0	0	0	0	0	0	0	0	0	0	0	0	0	0	0	0	.	.	19.663	586.80	42.8635	12.1212	4.0706	7.6923	

This supplementary material lists the 39 landscapes sampled and analyzed in the present study. For each of them, a map was created showing the land use classes used in the analyses. The final map shows all analyzed landscapes in a regional perspective.



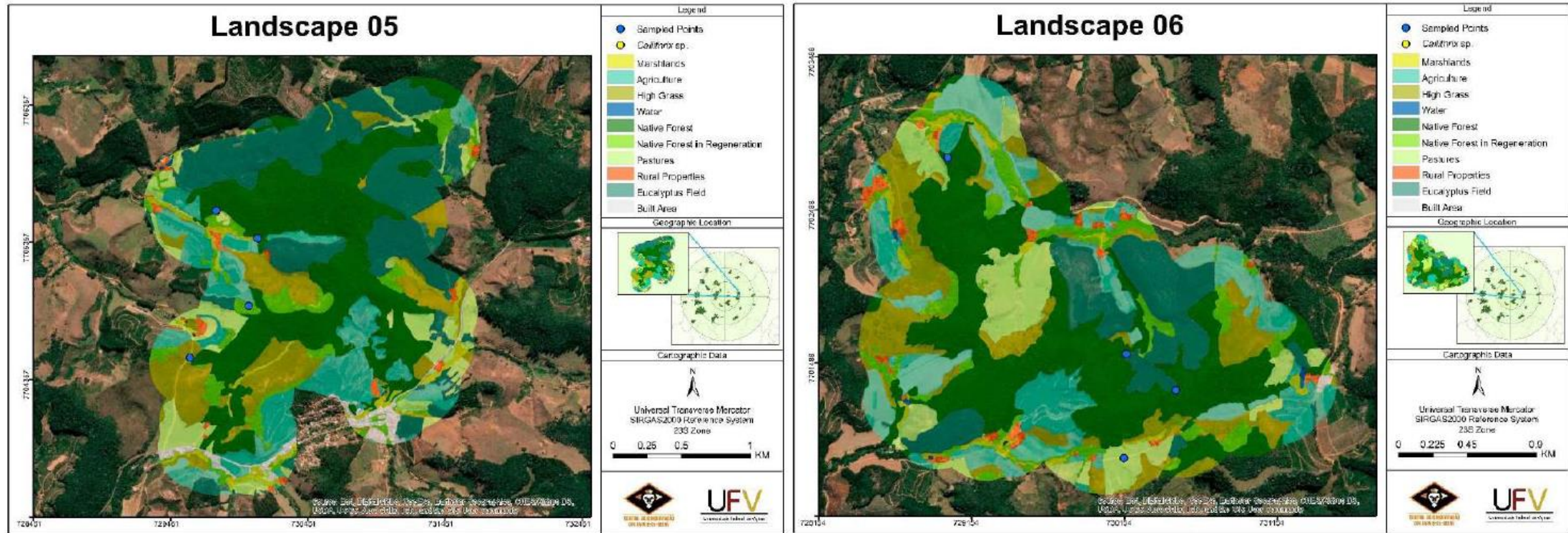
Cont...

Cont...



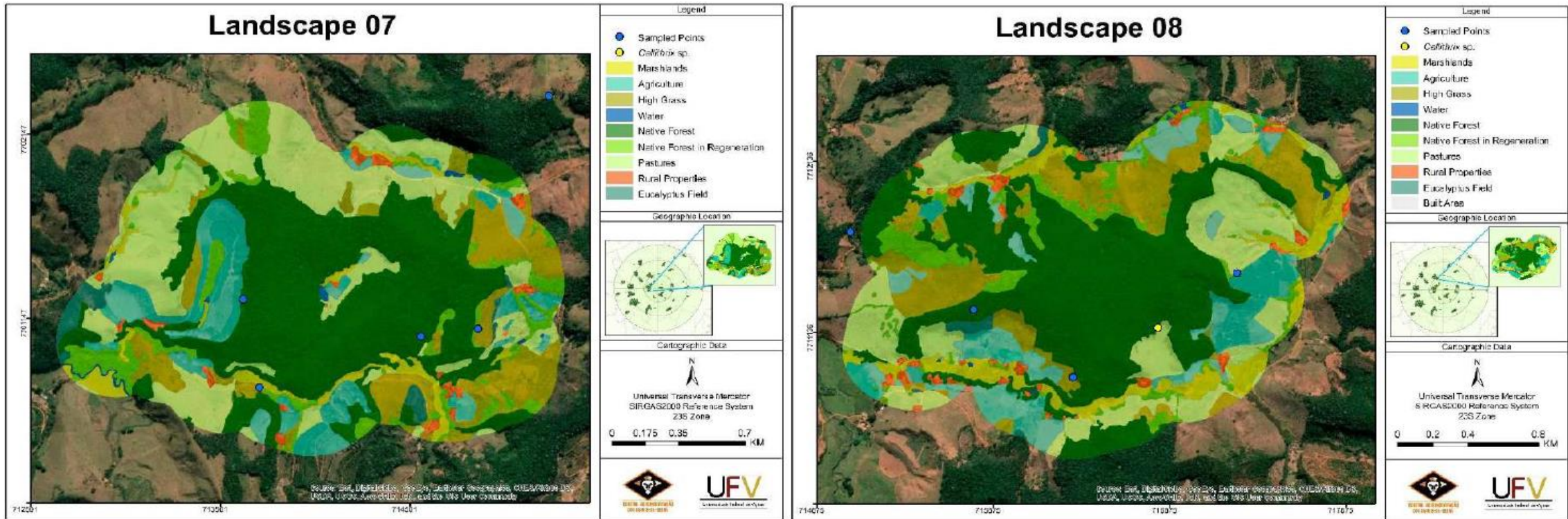
Cont...

Cont...



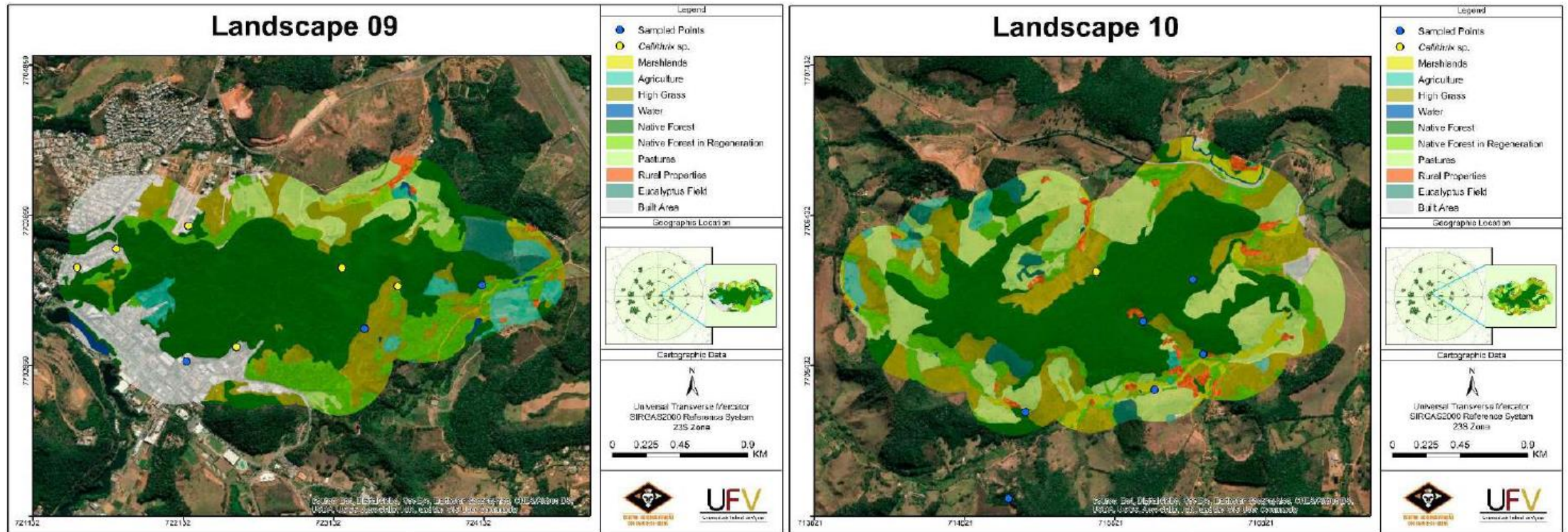
Cont...

Cont...



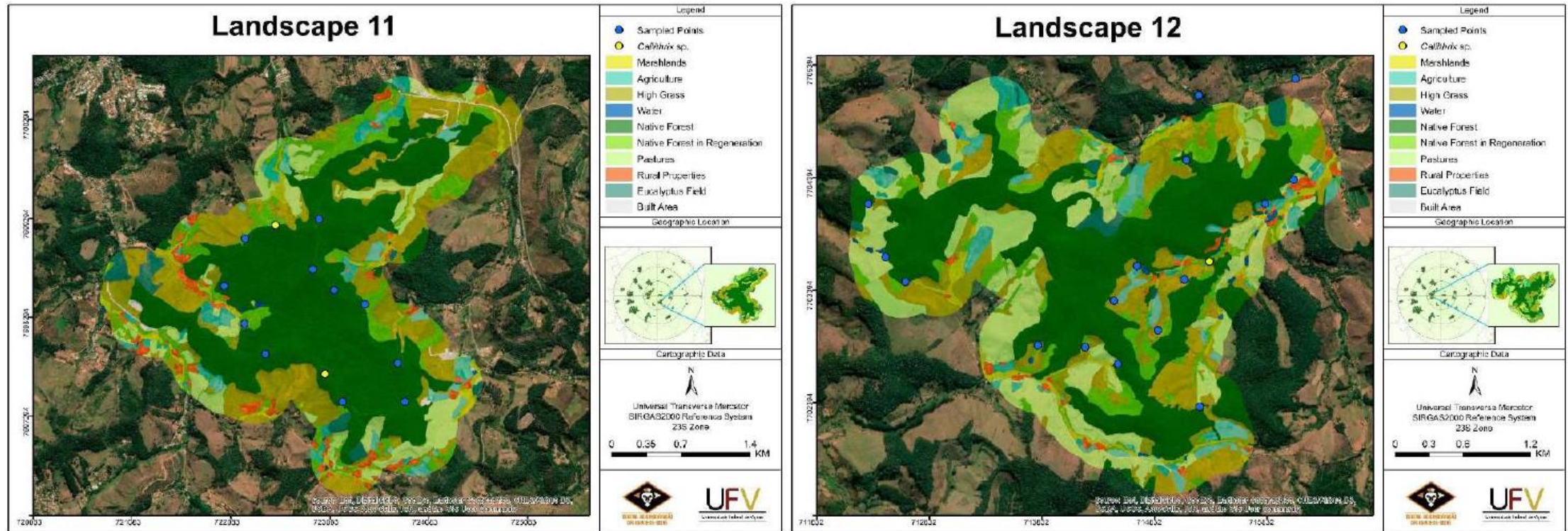
Cont...

Cont...



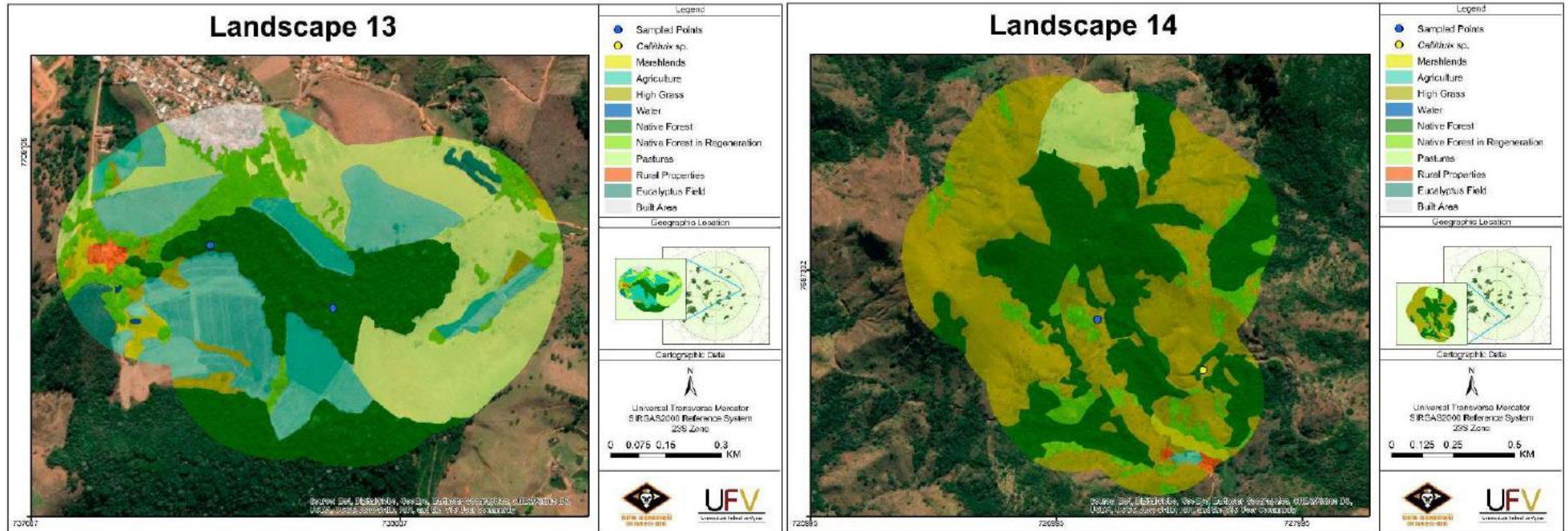
Cont...

Cont...



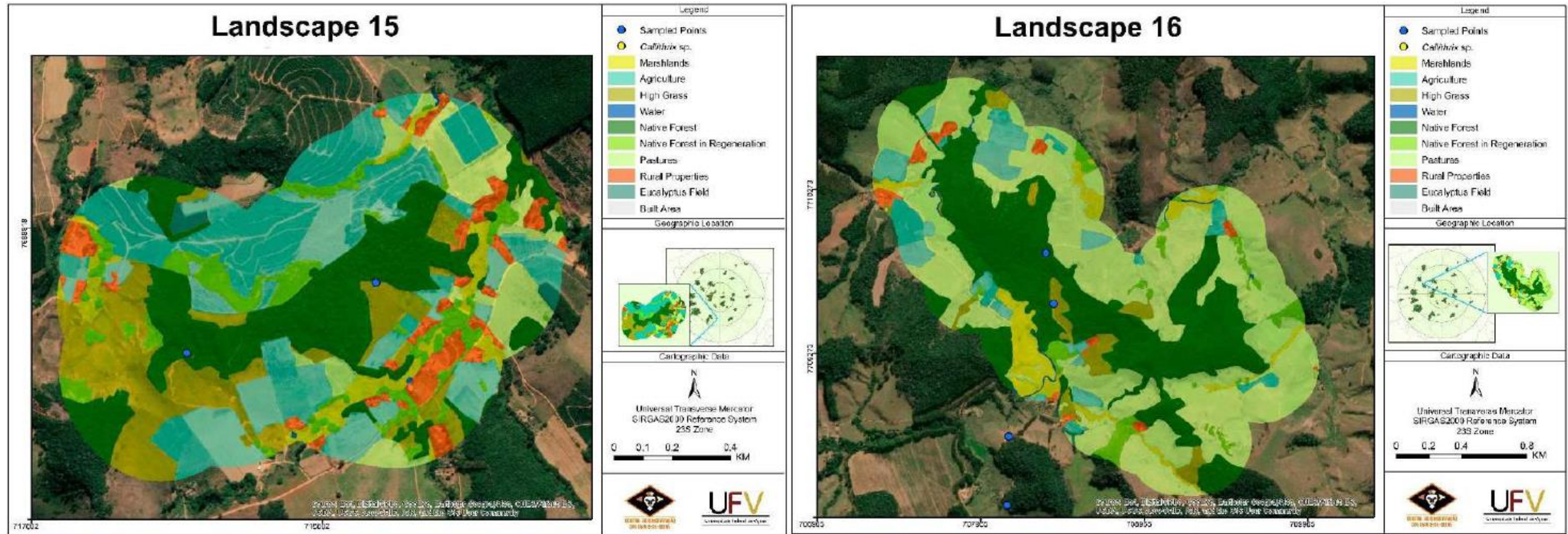
Cont...

Cont...



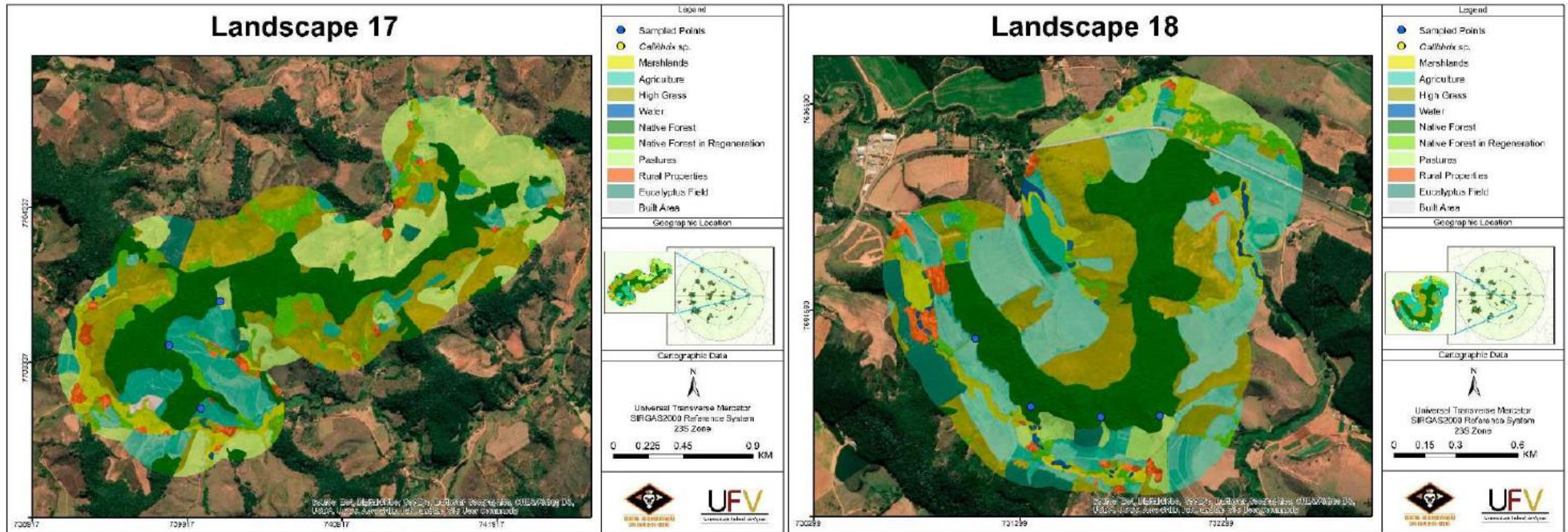
Cont...

Cont...



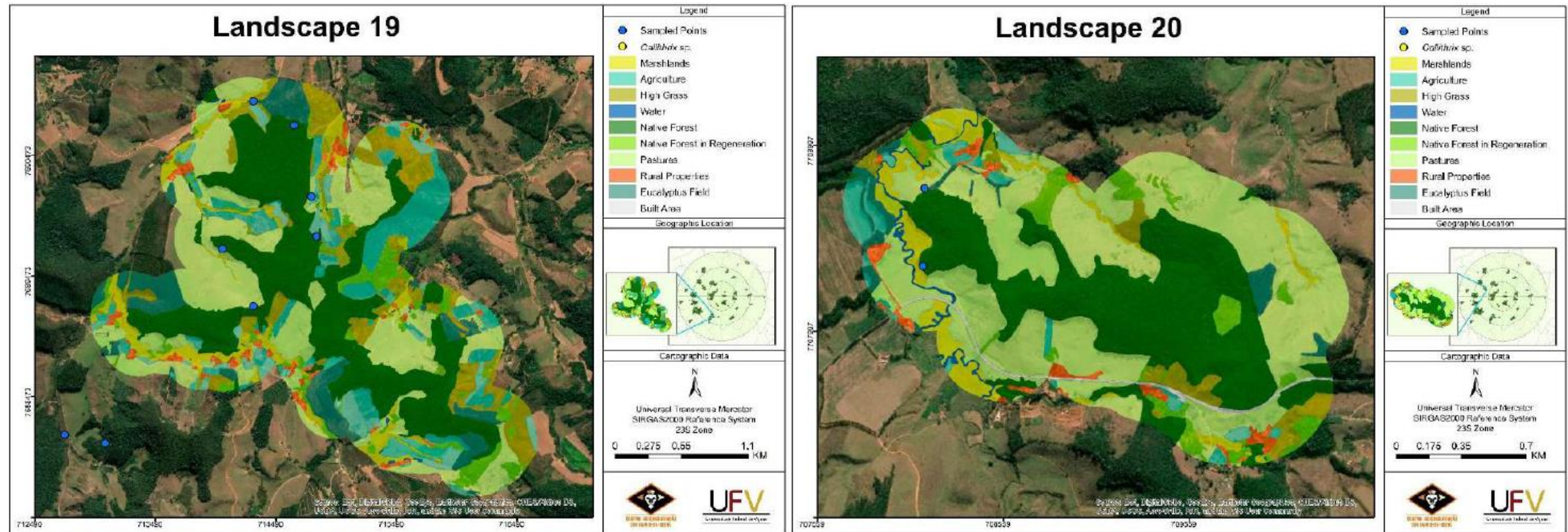
Cont...

Cont...



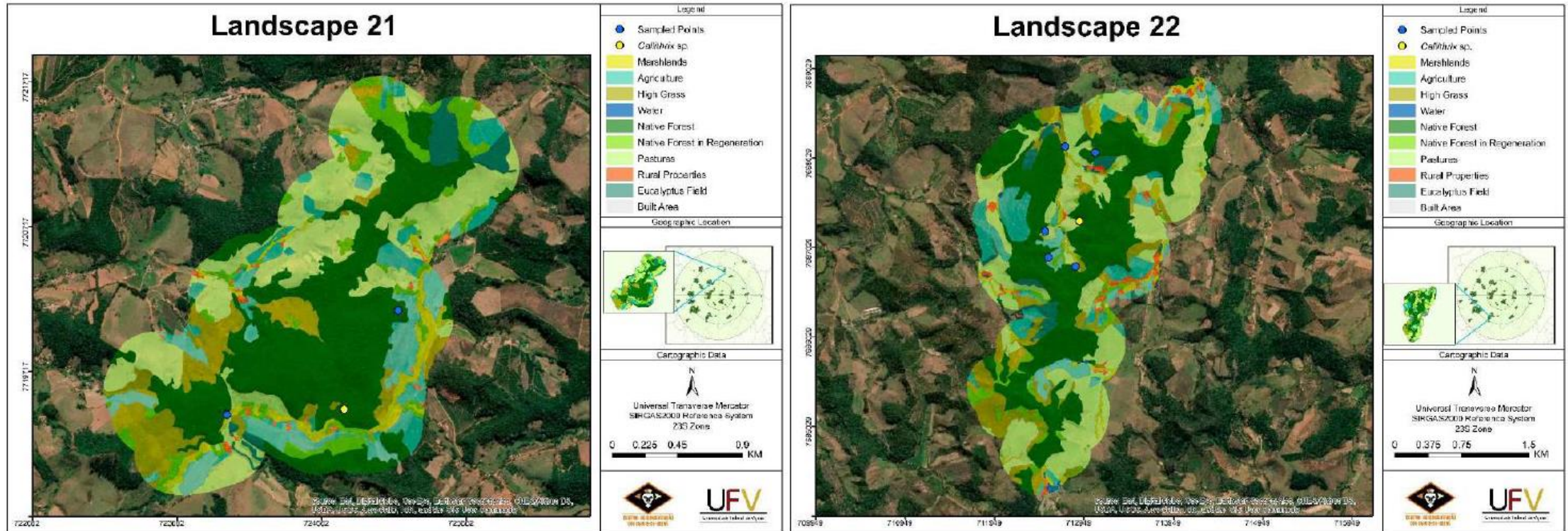
Cont...

Cont...



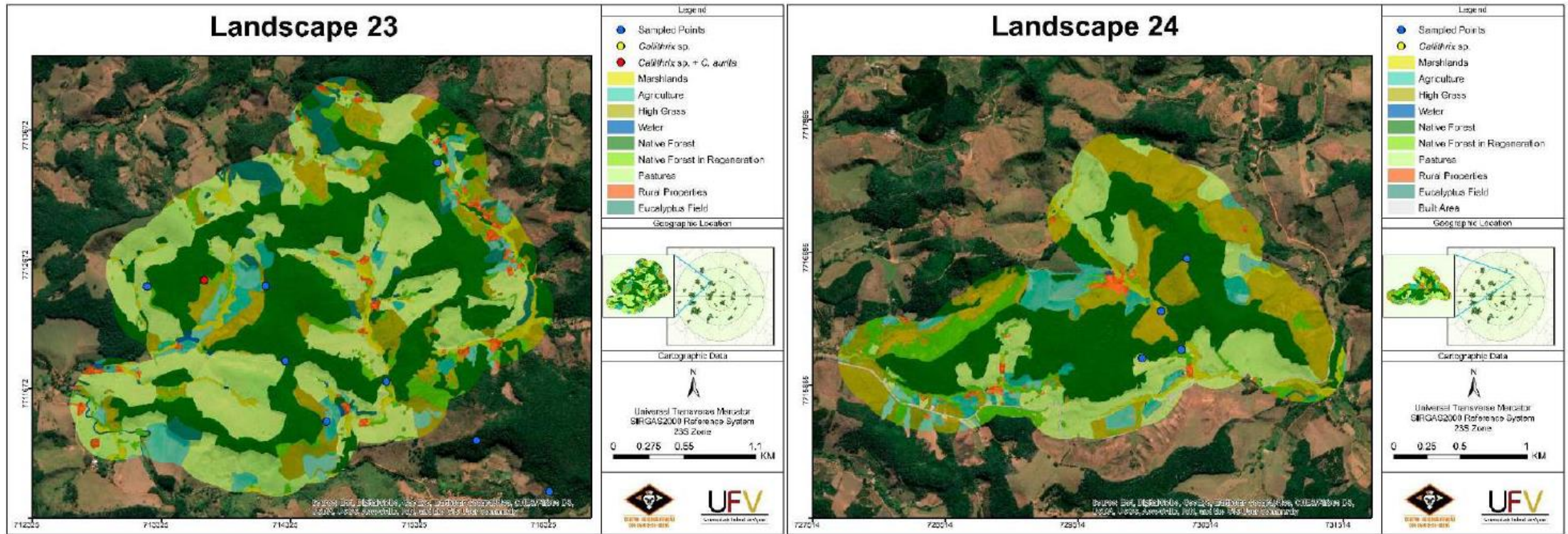
Cont...

Cont...



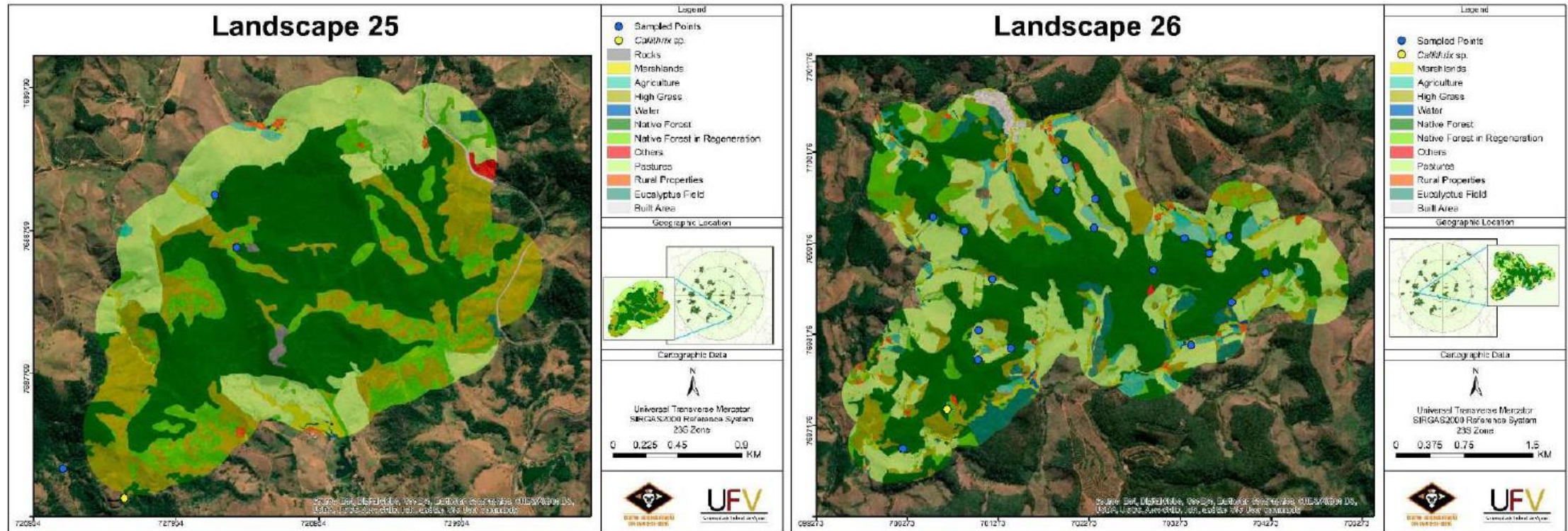
Cont...

Cont...



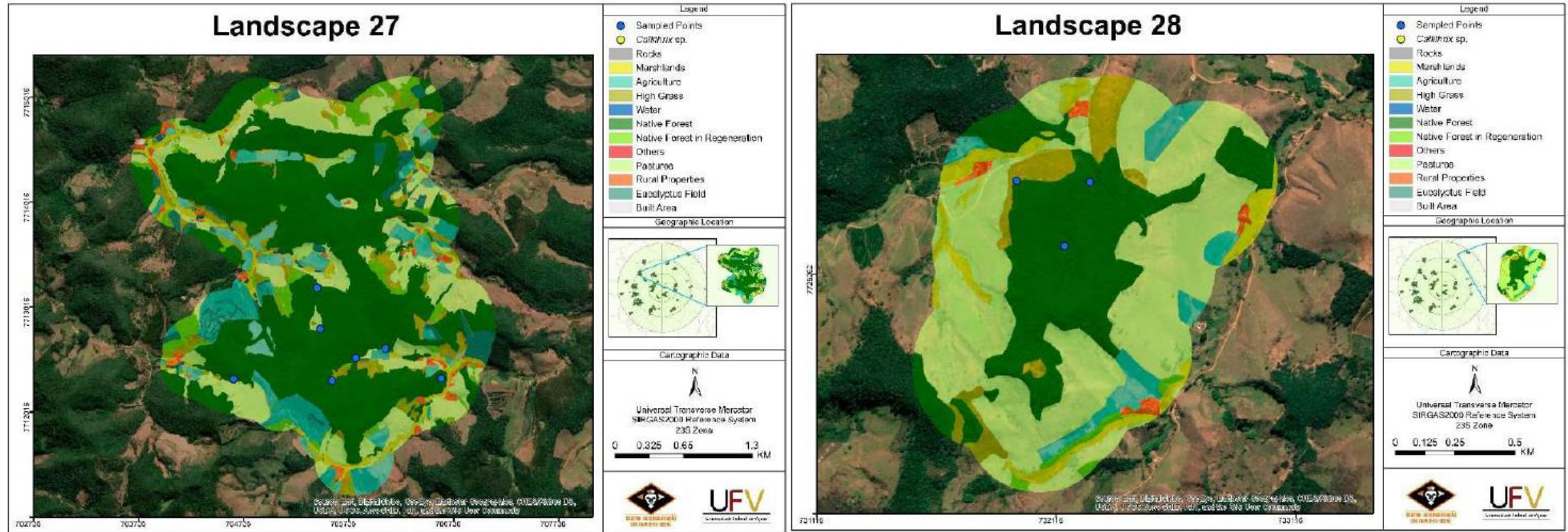
Cont...

Cont...



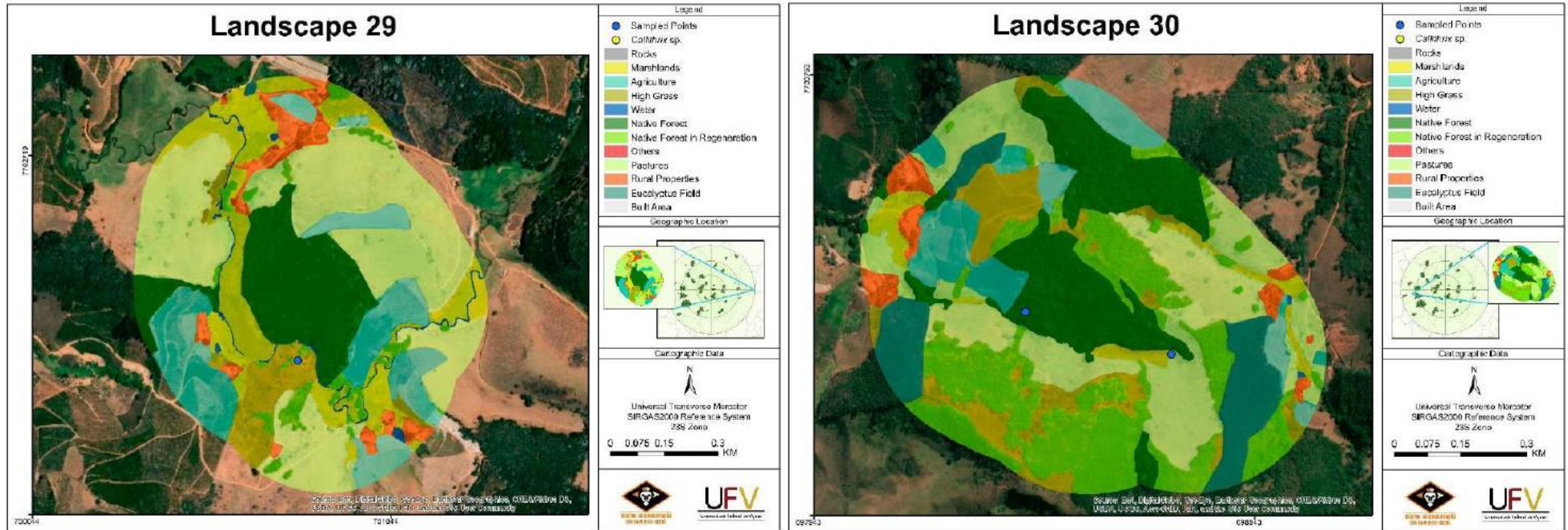
Cont...

Cont...



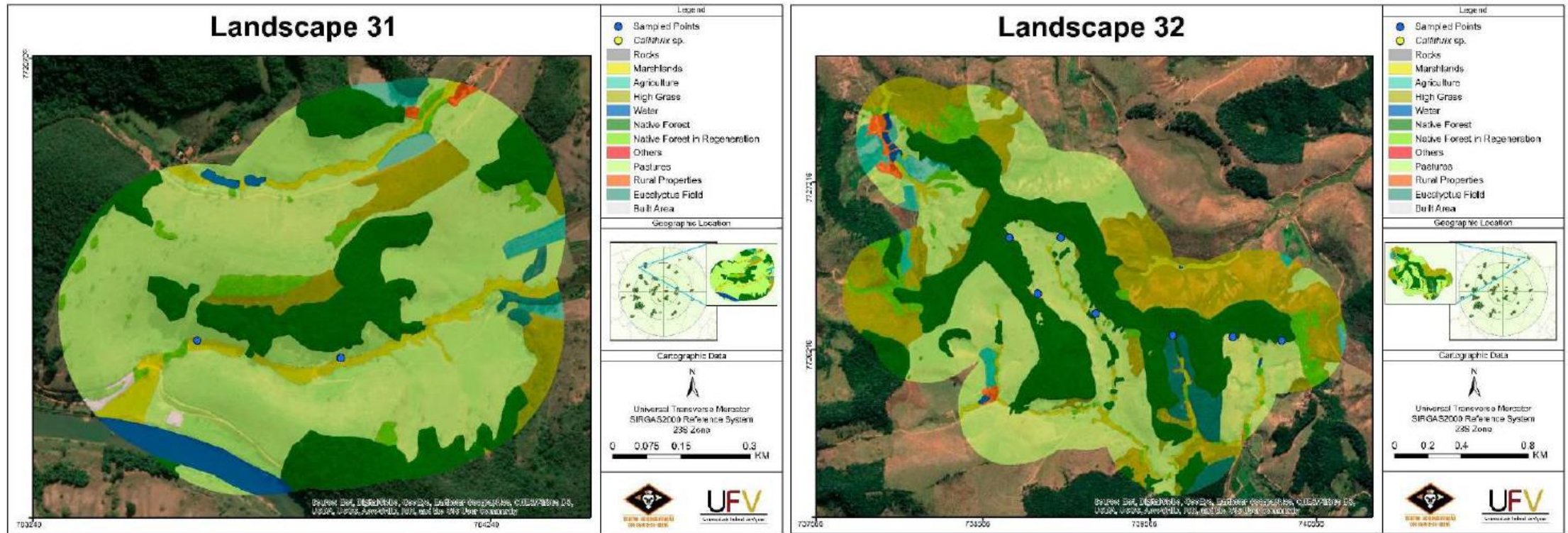
Cont...

Cont...



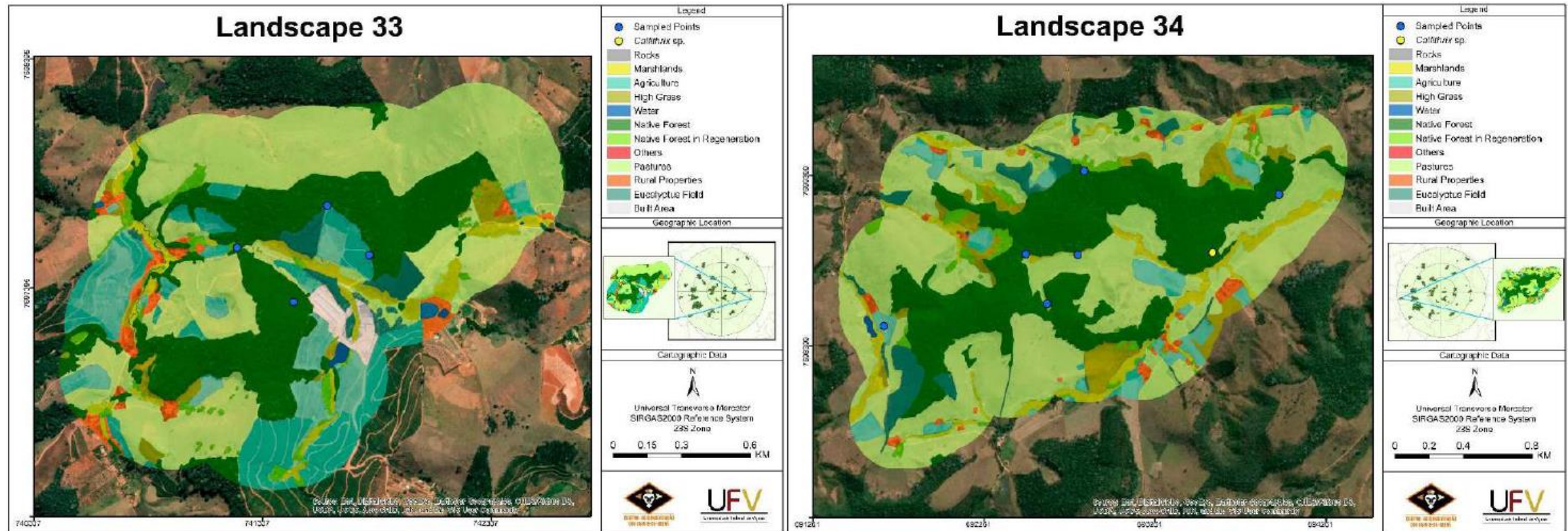
Cont...

Cont...



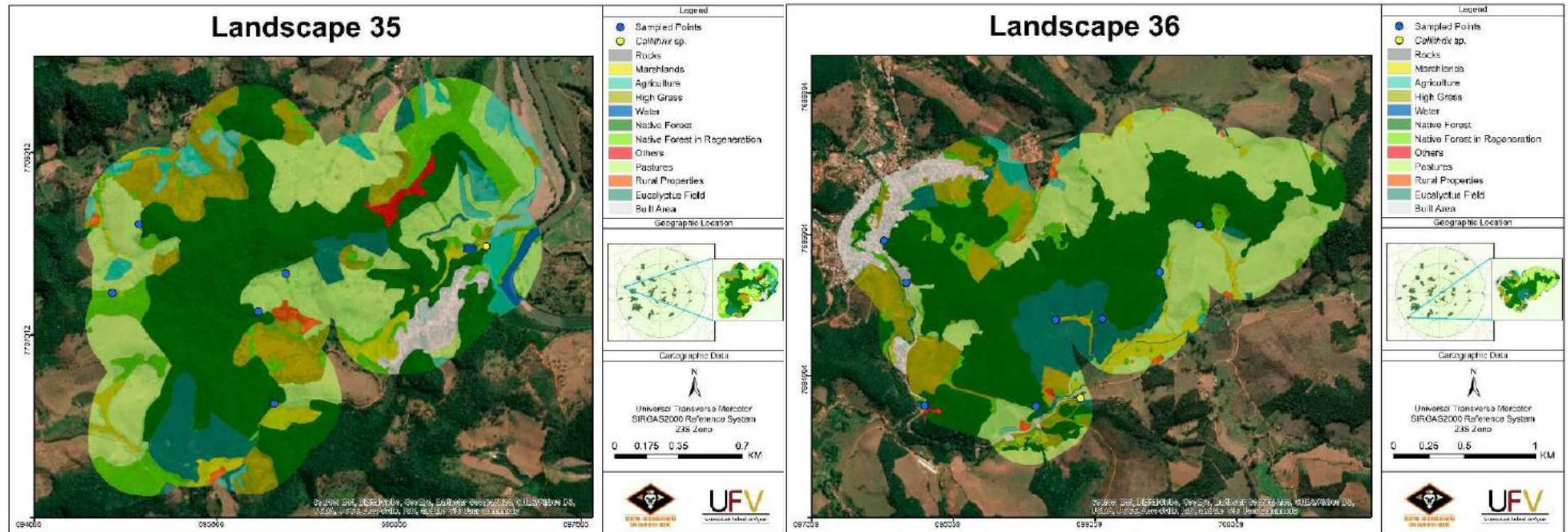
Cont...

Cont...



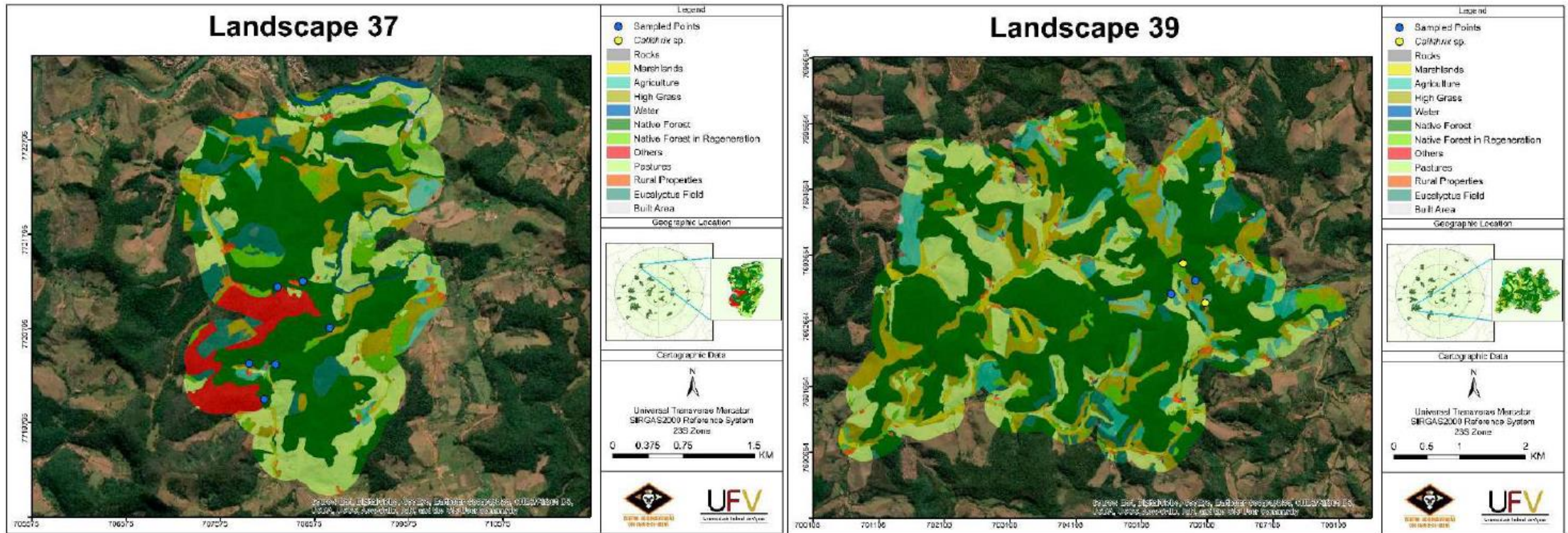
Cont...

Cont...



Cont...

Cont...



Cont...

Cont...

